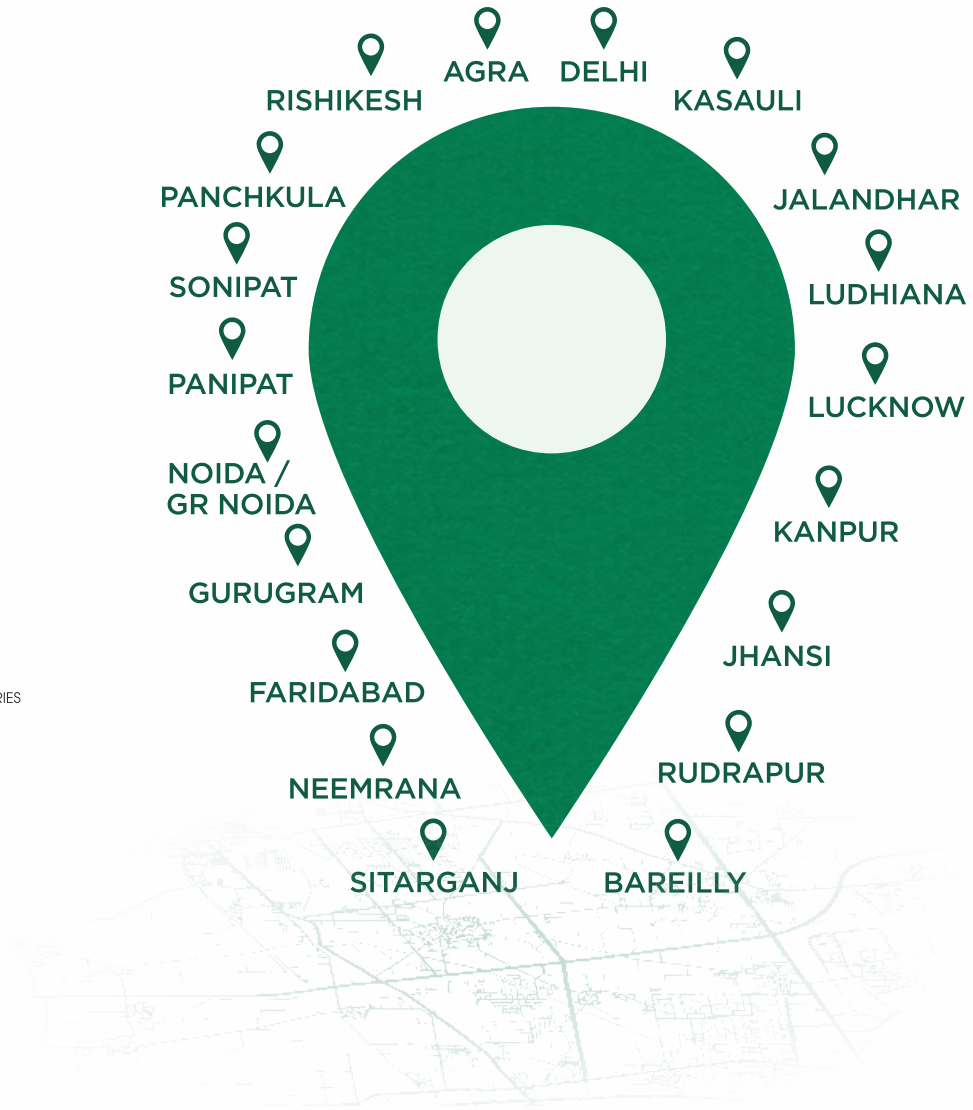


Choose an Eldeco home.

Live Better.

ELDECO

200+ PROJECTS DELIVERED | 35+ YEARS OF EXPERTISE | 30000+ SATISFIED CUSTOMERS | 50000+ CSR BENEFICIARIES



To know more:

999 000 9458

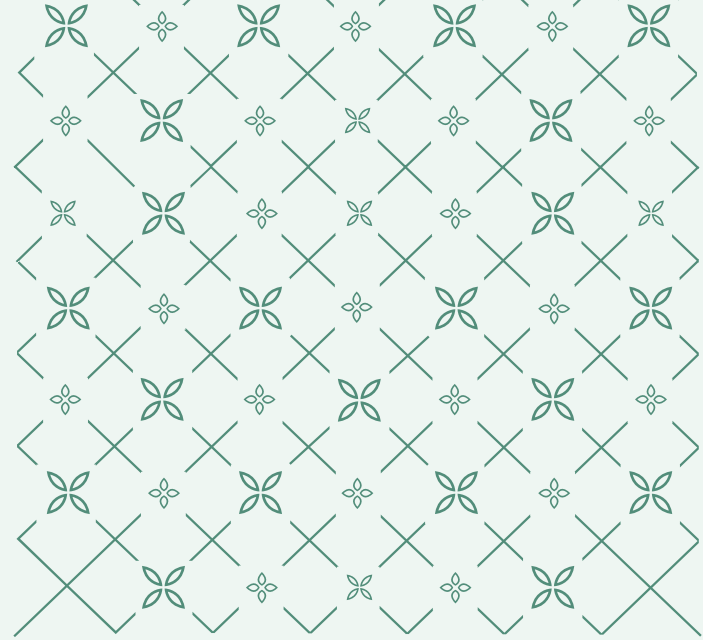
Site Office: Sector - 33, Sonipat,
Haryana, 131001

Disclaimer: Eldeco Amor ('Project') is being developed by Eldeco Infracon Realtors Limited (CIN No. U70109DL2021PLC390926) having registered office at 201-212, Splendor Forum, 11th Floor, Jasola District Centre, New Delhi-110025, on a land admeasuring 16.31875 acres, situated at Sector 33, Sonipat Haryana, pursuant to license no 181 of 2023 dated 11.09.2023 granted by Director Town and County Planning, Haryana under DDJAY-2016, Haryana (as amended from time to time). *Basic price of Plot having 976.86 sq. ft. Extra charges applicable. Conditions Apply. 1 Acre = 4840 sq. yds. or 4046.86 sq. mtrs., 1 sq. mtr = 10.764 sq. ft.

All information, images and visuals or sketched including landscaping shown in this advertisement are only for representation purpose only. Nothing contained herein intends to constitute a legal offer and does not form part of any legally binding agreement and/or commitment of any nature. Recipients/ viewers are advised to exercise their discretion in replying on the information shown/ provided and are requested to verify all the details, including area, amenities, services, terms of sales and payments and other relevant terms independently and take appropriate advice prior to concluding any decision for buying any plot(s) in the Project.

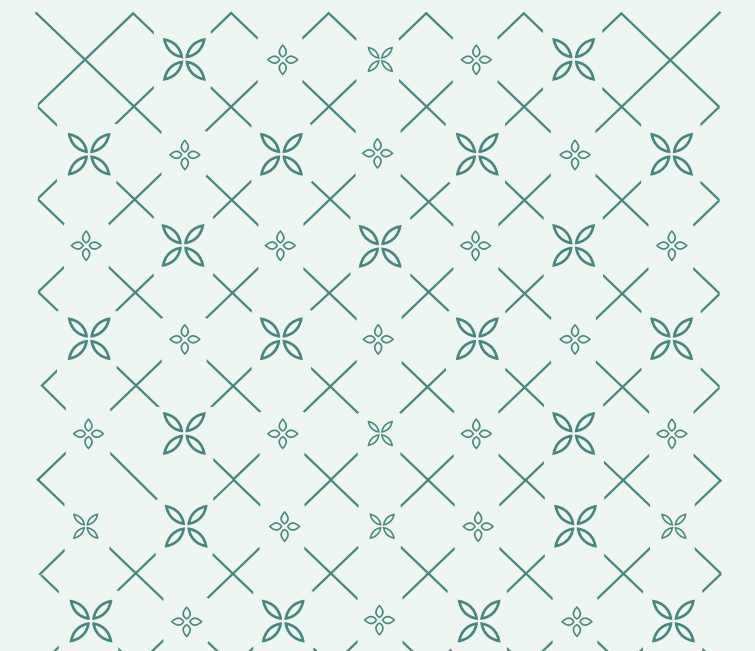


THE NEW BENCHMARK OF LUXURY LIVING



THE MODERN CLASSIC

Step into the charm of a leisurely life where the classic and the contemporary fuse together. A world where the serenity of a blissful life draws you into its beauty. With every boulevard taking you to the timeless allure of its majestic villas and grand residential plots, you always feel surrounded by an aura of elegance.



WELCOME TO



ELDECO

AMOR

SECTOR 33, SONIPAT

On the cross roads of Sonipat- Delhi border lies a serene township, tucked away from the hustle and bustle of city, yet connected with the national capital. We welcome you to **Eldeco Amor**, where you can mark your unique signature on life with palatial villas and plots amidst the lush green landscapes. We invite you to discover a life crafted for the modern connoisseur - one where the finest traditions of architecture are reimagined for the discerning few.



ACCESS THE EXTRAORDINARY WITH EASE



ELDECO

AMOR
SECTOR 33, SONIPAT



PANIPAT

55 KM

KHARKHODA

35 KM

AMBALA

170 KM

KARNAL

85 KM

NOIDA

70 KM

PASCHIM VIHAR

40 KM

ROHINI

30 KM

SHALIMAR BAGH

30 KM

PITAMPURA

35 KM

ASHOK VIHAR

35 KM

DELHI BORDER

15 KM

MODEL TOWN

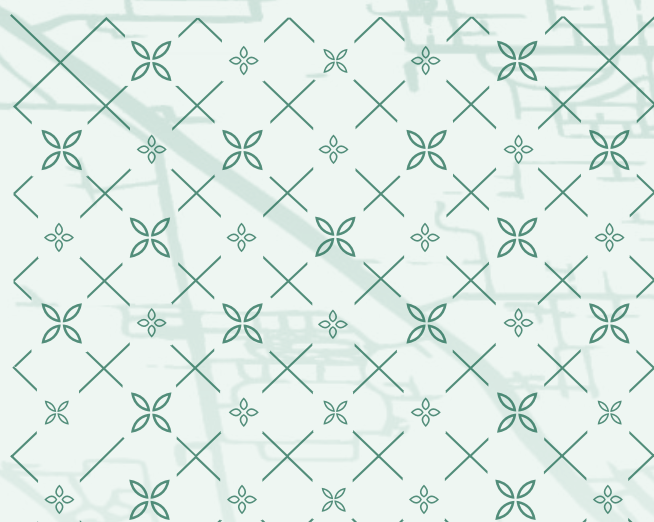
30 KM

PUNJABI BAGH

40 KM

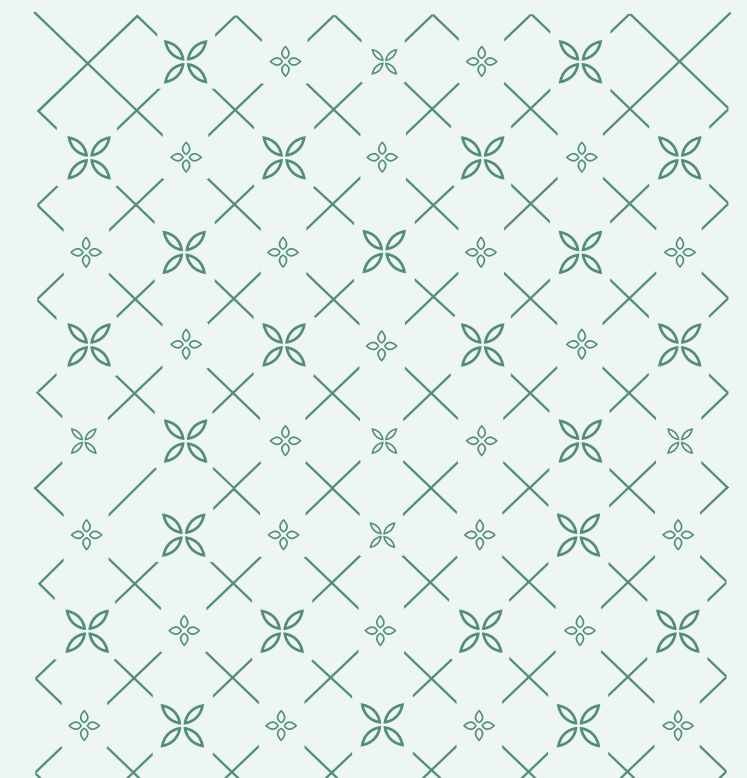
GURUGRAM

70 KM





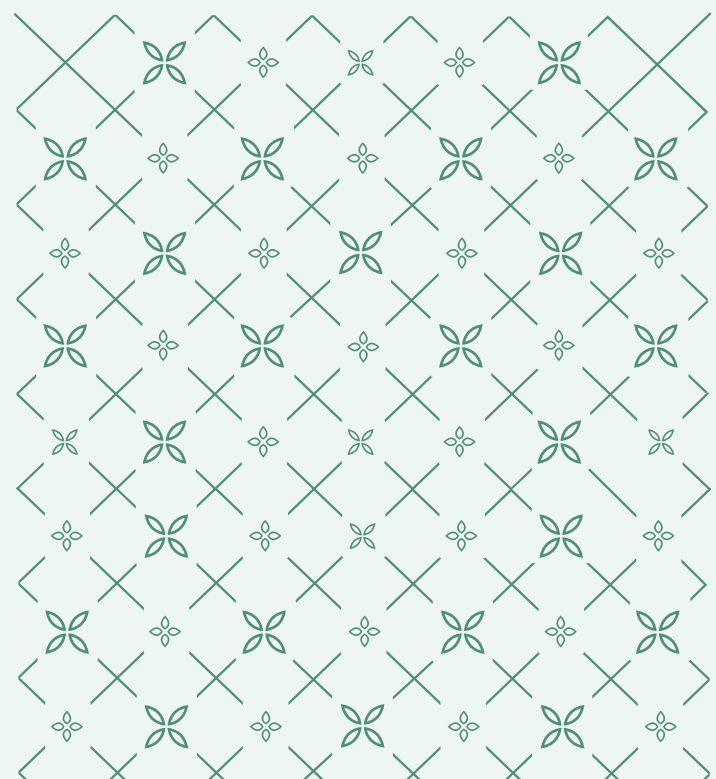
A PALATIAL COMMUNITY AT DELHI'S DOORSTEP



ARTISTIC RENDER

MAJESTIC HOMES FOR THE CONNOISSEURS

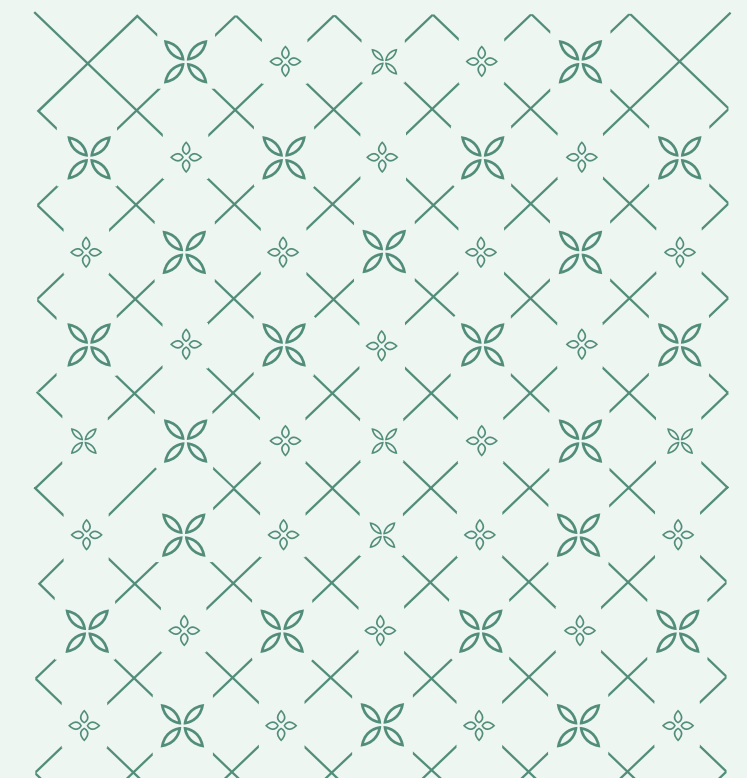
Crafted with the vision and flair of an artist, **Eldeco Amor** is more than just an address. A canvas for the expression of your unique story, here every detail whispers of a beauty beyond its alluring aesthetics.



ARTISTIC RENDER



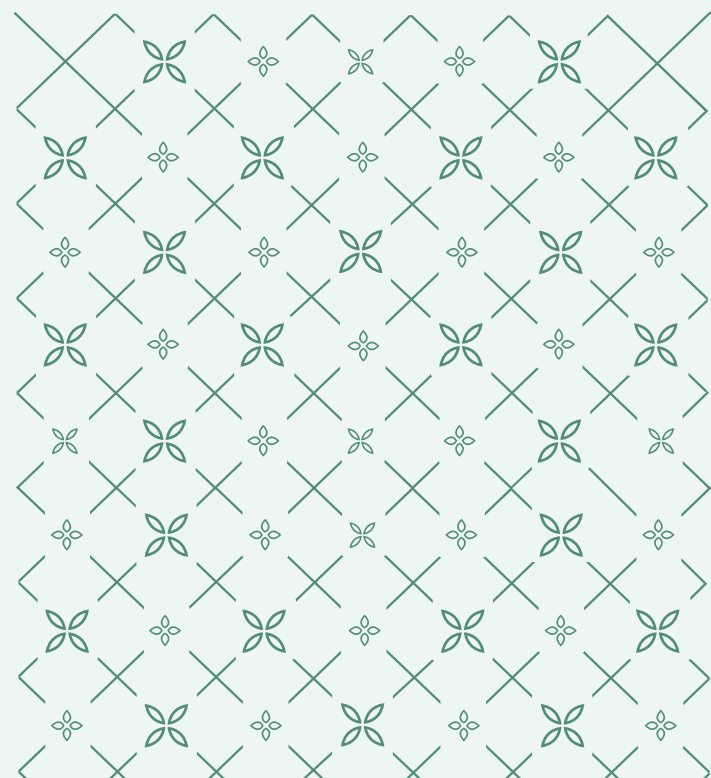
MODERN RETAIL CONVENIENCE FOR AN INDULGING LIFE



ARTISTIC RENDER

Fall in love with irresistible lifestyle

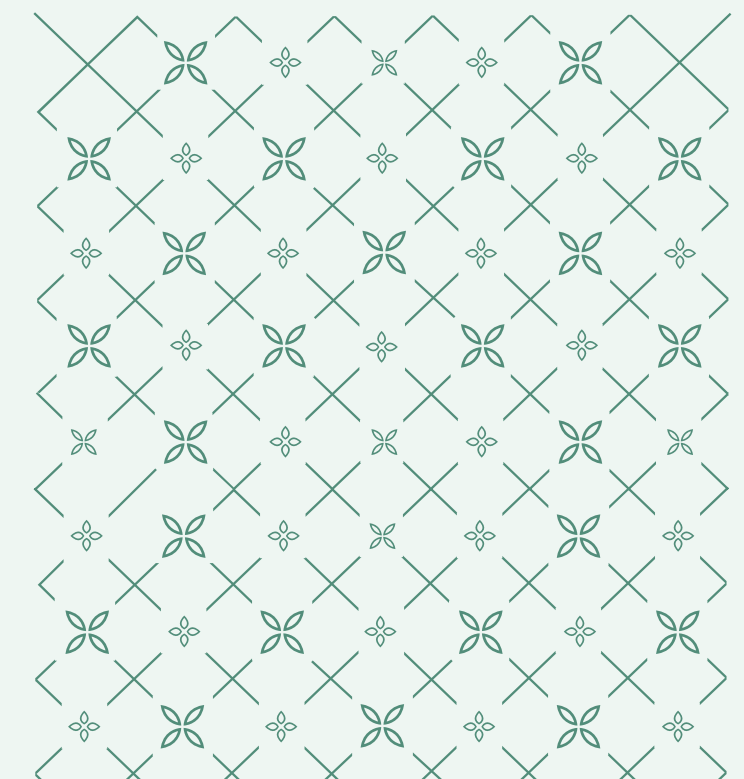
Step into the captivating world of our community living, where the irresistible charm of vibrant lifestyle intertwines to create a tapestry of shared moments. Embrace the warmth, joy, and richness that accompanies falling in love with the extraordinary experiences we collectively cultivate



ARTISTIC RENDER



ECHOES OF SERENITY,
A LIFE SURROUNDED
BY BLISS



ARTISTIC RENDER

Where hearts beat in harmony with nature

Eldeco Amor is more than just a dwelling. Surrounded by nature's green scapes and lush gardens, its timeless charm is the perfect backdrop for a healthy and active lifestyle.

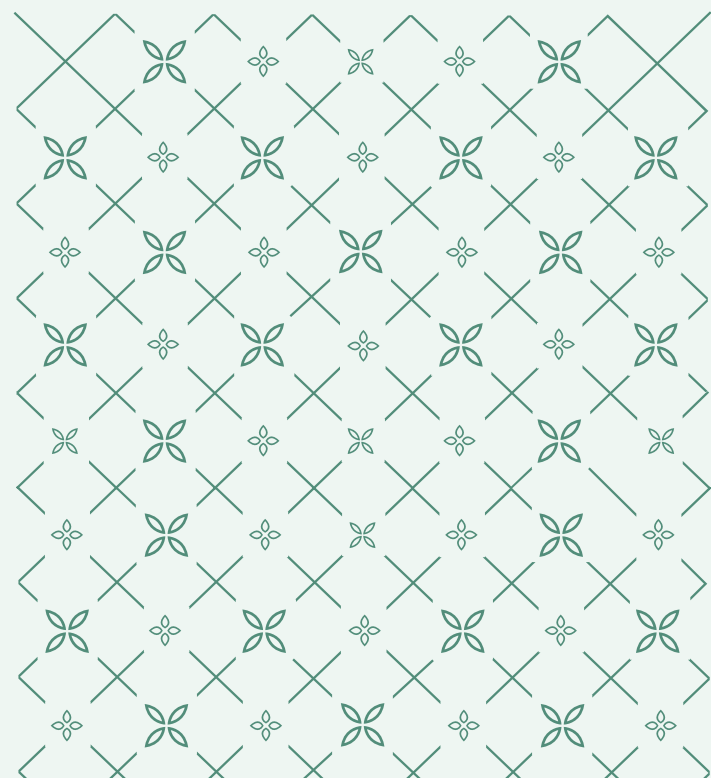


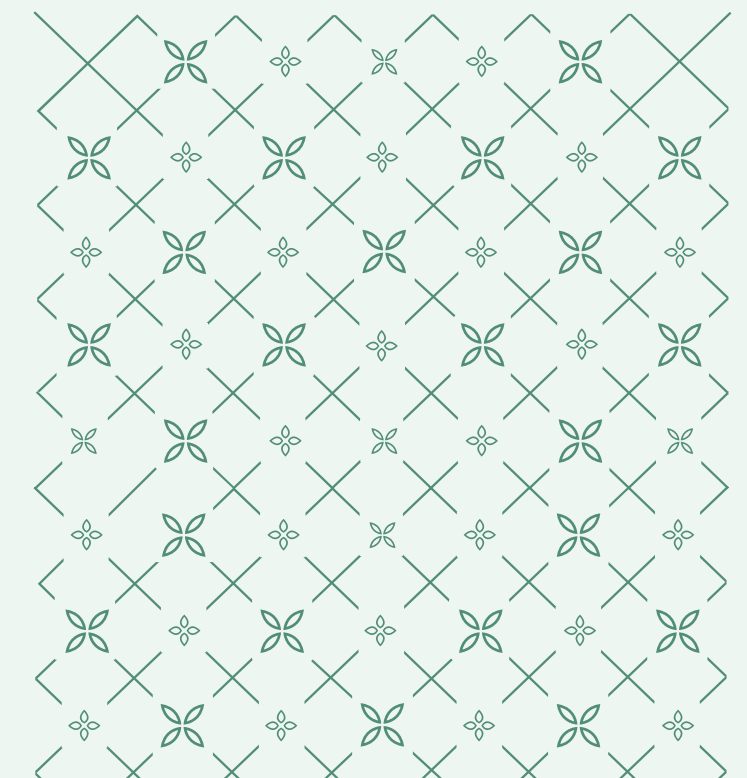
IMAGE USED FOR REPRESENTATION PURPOSE ONLY





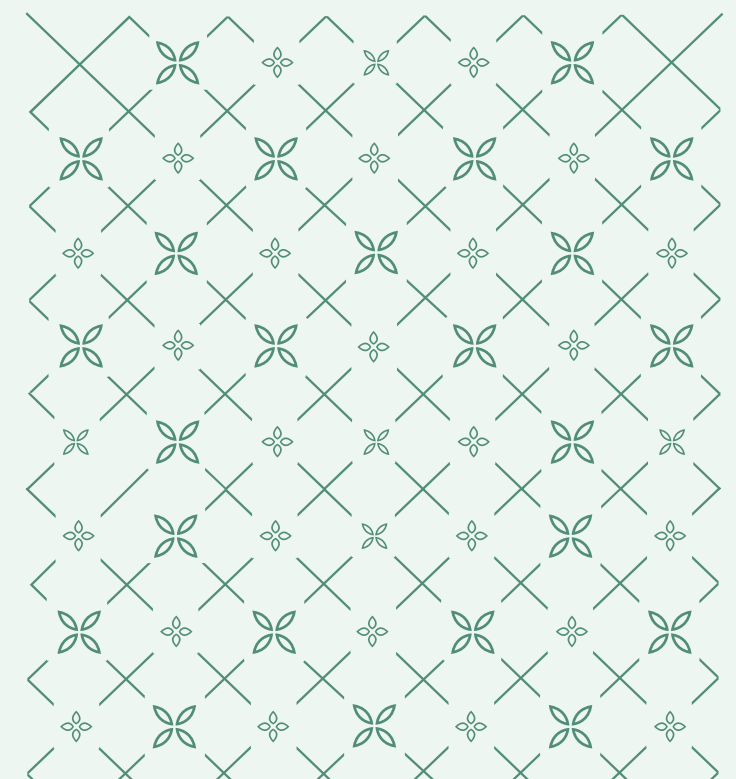
ARTISTIC RENDER

TAPESTRY OF GRANDIOSE LUXURY





THE ORDINARY FINDS
ITS EXTRAORDINARY
HERE



ARTISTIC RENDER

An Affair with Recreational Convenience

Imagine starting your day with a refreshing dip in the sparkling pool, surrounded by serene environment. Challenge your limits in the state-of-the-art gym. Host unforgettable evenings with friends and family in the beautiful landscape. Experience a life with the seamless flow of convenience.



Multi purpose hall



Roof top Swimming Pool



Kids play area



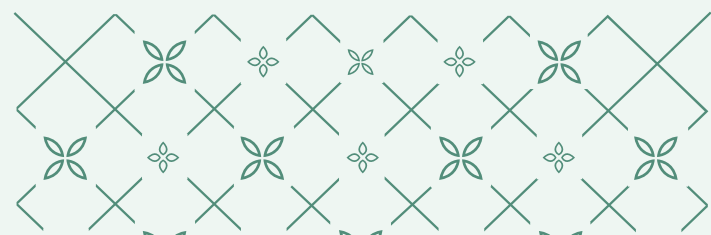
Party Arena



Gym



Indoor Badminton Court

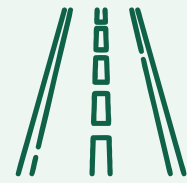


ARTISTIC RENDER

Amenities



GATED
COMMUNITY



ON 24 METER
WIDE ROAD



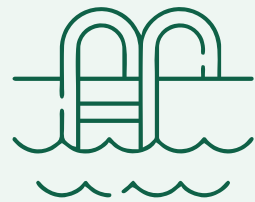
CLUB
AMOR



LANDSCAPE
GREENS



CCTV
SURVEILLANCE



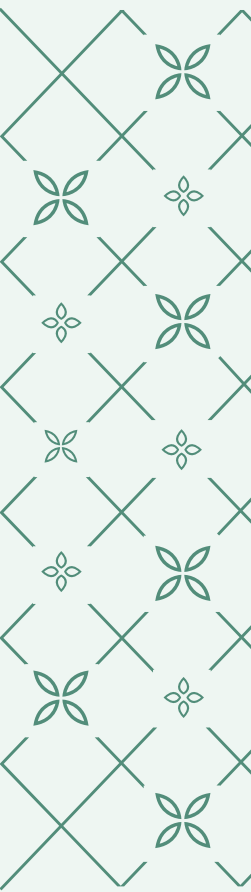
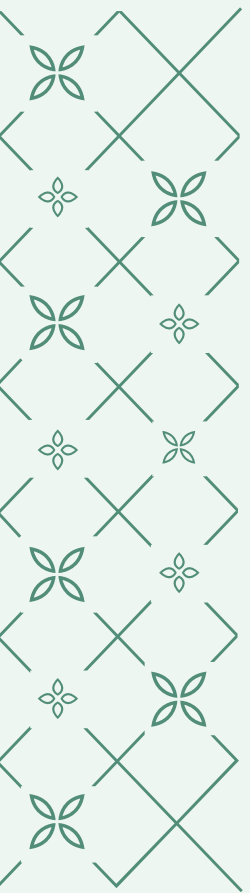
ROOF TOP
SWIMMING POOL



YOGA &
MEDITATION PARK



CONVENIENT
SHOPPING





LOCATION MAP

SECTOR 33, SONIPAT

LOCATION ADVANTAGES

Aashirwad Multi Speciality Bhagat Hospital

ORCHIDS - The International School

Amrik Sukhdev

Mannat Haveli

IN CLOSE PROXIMITY TO UPCOMING PLANNED METRO STATIONS

5 KM (Approx.)

CLOSE TO KMP

8 KM (Approx.)

IN CLOSE PROXIMITY TO THE UPCOMING SPECIAL ECONOMIC ZONE (SEZ)

8 KM (Approx.)

CLOSE TO DELHI BORDER

15 KM (Approx.)

IN CLOSE PROXIMITY TO SCHOOLS, HOSPITALS AND SHOPPING MALLS

5 KM (Approx.)

Haryana Multispeciality Hospital

Tau devj Lal Park



Pacific mall



SECTOR-33



TURN RIGHT

FLYOVER

TOWARDS ELDECO AMOR

NATIONAL HIGHWAY 334B

TOWARDS DELHI

Rai Sports Complex



TOWARDS ROHTAK



Ansal Highway Plaza



THE PALMS Global School





A New
Gateway
to Delhi

Sanctuary
of peace

